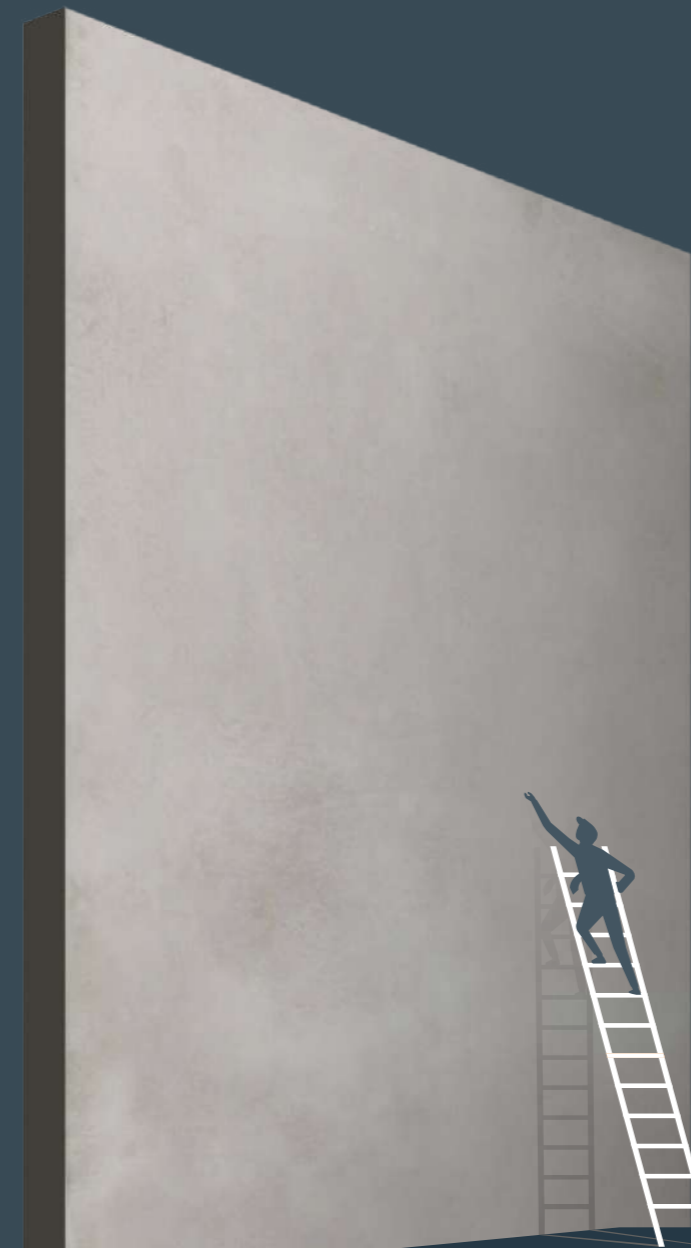




**PEROLINI**

LUXE TILES

EXCLUSIVE  
|  
INNO-  
VATION



**PEROLINI**

LUXE TILES

 **UAE**

TASHEEL ROUNDABOUT,  
AL SAJAA INDUSTRIAL AREA,  
SHARJAH -UAE

+971566299377 | +971522297071

 **INDIA**

MAHENDRANAGAR CHOKDI,  
RAMESHWAR COMPLEX, MORBI-363642.  
(GUJ), INDIA.

+919446379696 | +919495339877

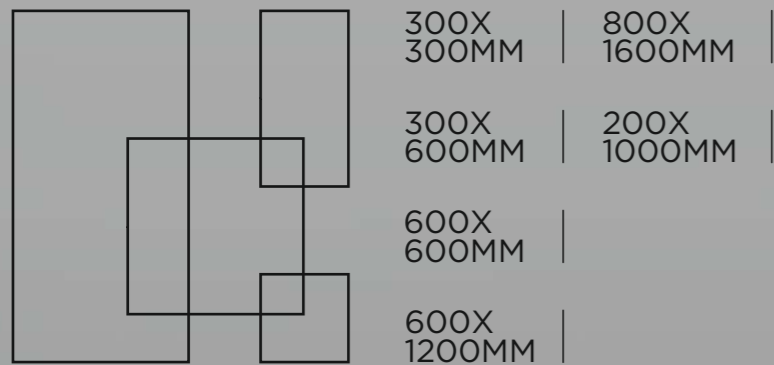
Web : [www.perolini.co](http://www.perolini.co)

Email : [sales@perolini.co](mailto:sales@perolini.co)

# ABOUT US

Welcome to PEROLINI CERAMICS, where you can discover a selection of products and solutions to help you create an ideal living and enthralling work space. We started our journey since 1973. Today, we are a recognized name in the industry. It is our endeavor to deliver endless choice and enviable quality at endearing prices. We have developed an understanding of what customers want, through years of experience and we constantly strive to deliver it. Our customers are pampered with oodles of attention and spoiled for choice. This is because - Your satisfaction is our inspiration!

We leave no stone unturned as our premier products are manufactured with superior quality Ceramic raw materials ensuring ultimate tile strength, glaze and finishing. We are committed to supply the highest quality products and strive to surpass customer expectations. We understand the value of money and ensure that our customers feel completely content for what they spend at Perolini Ceramics in terms of cost and quality. We offer a host of constantly attempt to deliver products that keep up with the latest trends in the industry.



# APPLICATIONS AREA



 LIVING ROOM	 BATHROOM	 SHOWROOM	 BAR & RESTAURANT	 RECEPTION	 KITCHEN
 FACADE	 SPA & WELLNESS CENTERS	 HOTELS	 RETAIL MALLS	 VENTILATED CURTAIN	 OUTDOOR

## TECHNICAL SPECIFICATIONS

 HIGH STRENGTH	 ANTISKID	 ECO FRIENDLY	 SCRATCH RESISTANT	 STAIN RESISTANT	 CHEMICAL RESISTANT	 LOW MAINTENANCE
--	---	---	---	---	--	---



**CERAMIC  
TILES**

**300X600MM  
300X300MM**

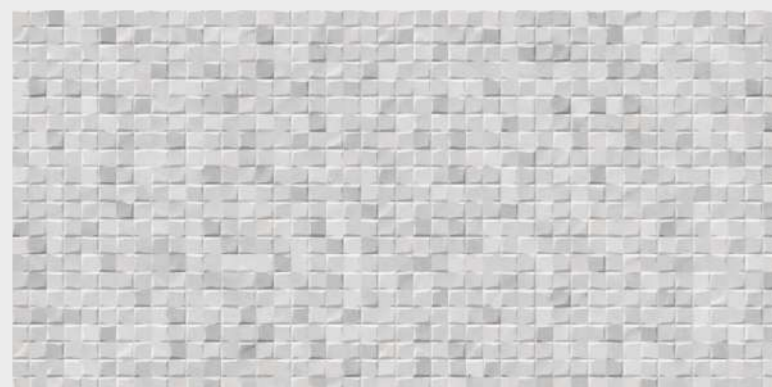
**FINISH  
MATT**



**PEROLINI**  
LUXE TILES



**4144 - L**



**4144 - HL**



**4144 - FL**

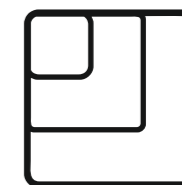




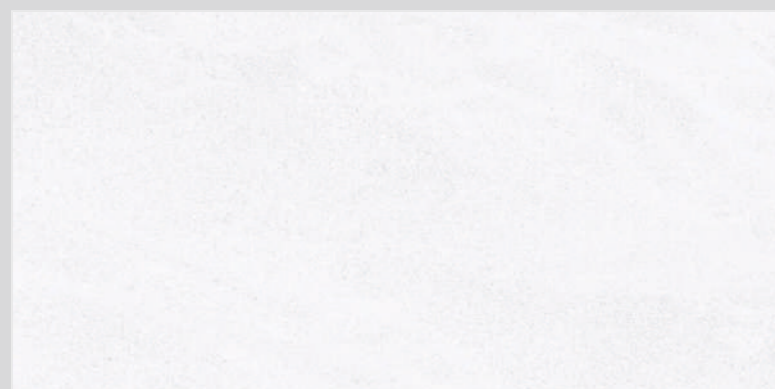
**CERAMIC  
TILES**

**300X600MM  
300X300MM**

**FINISH  
MATT**



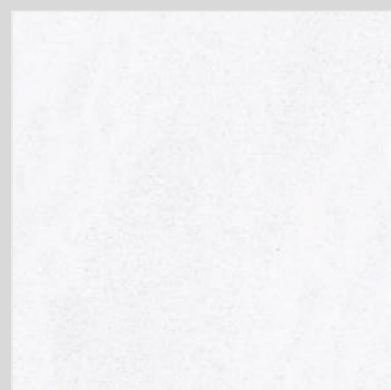
**PEROLINI**  
LUXE TILES



**9024 - L**



**9024 - HL**



**9024 - FL**





**CERAMIC  
TILES**

**300X600MM  
300X300MM**

**FINISH  
MATT**



**PEROLINI**  
LUXE TILES



**9025 - L**



**9025 - HL**



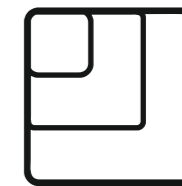
**9025 - FL**



**CERAMIC  
TILES**

**300X600MM  
300X300MM**

**FINISH  
MATT**



**PEROLINI**  
LUXE TILES



**9027 - L**



**9027 - HL**



**9027 - FL**





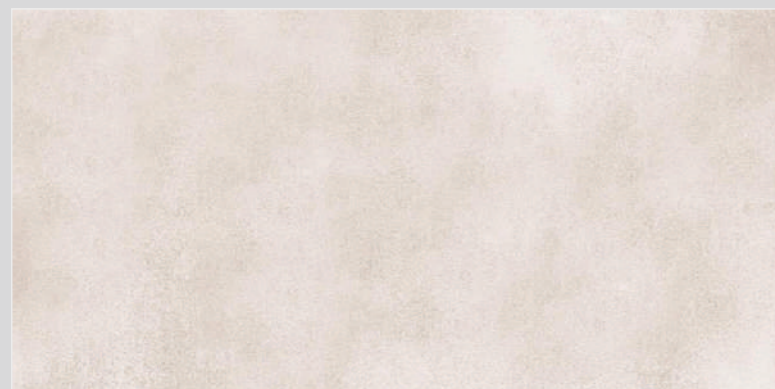
**CERAMIC  
TILES**

**300X600MM  
300X300MM**

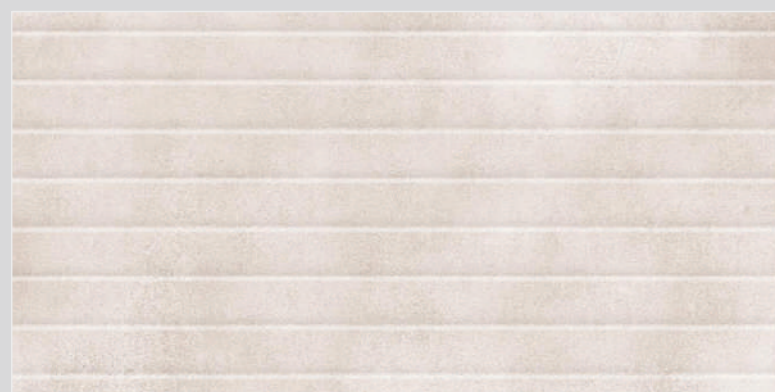
**FINISH  
MATT**



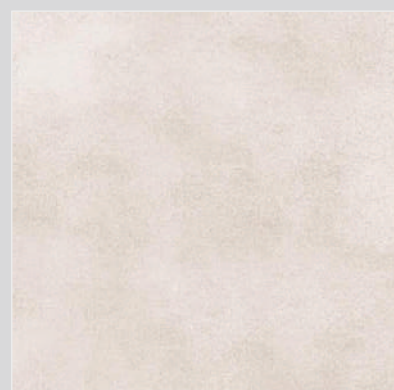
**PEROLINI**  
LUXE TILES



**9028 - L**



**9028 - HL**



**9028 - FL**





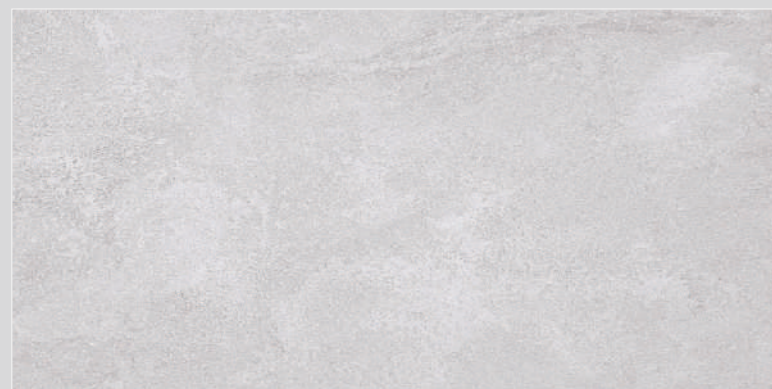
**CERAMIC  
TILES**

**300X600MM  
300X300MM**

**FINISH  
MATT**



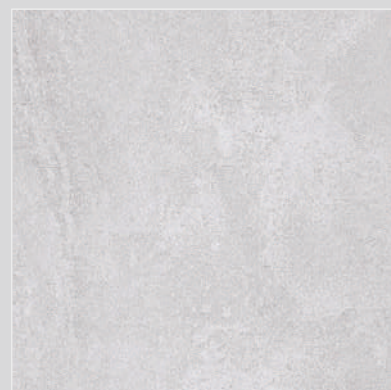
**PEROLINI**  
LUXE TILES



**9219 - L**



**9219 - HL**



**9219 - FL**





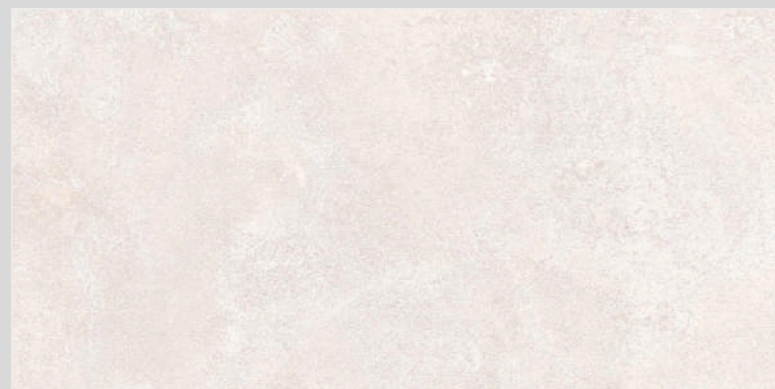
**CERAMIC  
TILES**

**300X600MM  
300X300MM**

**FINISH  
MATT**



**PEROLINI**  
LUXE TILES



**9245 - L**



**9245 - HL**



**9245 - D**



**9245 - FL**





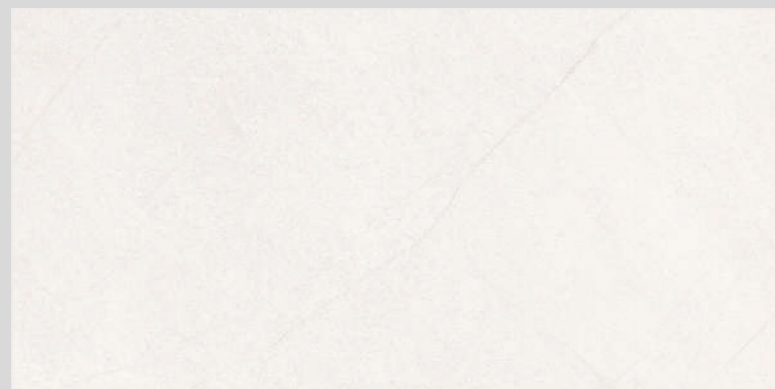
**CERAMIC  
TILES**

**300X600MM  
300X300MM**

**FINISH  
MATT**



**PEROLINI**  
LUXE TILES



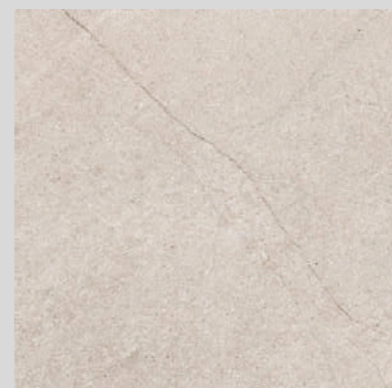
**9246 - L**



**9246 - HL**



**9246 - D**



**9246 - FL**

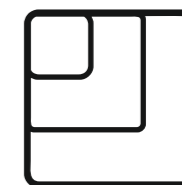




**CERAMIC  
TILES**

**300X600MM  
300X300MM**

**FINISH  
MATT**



**PEROLINI**  
LUXE TILES



**9247 - L**



**9247 - HL**



**9247 - FL**

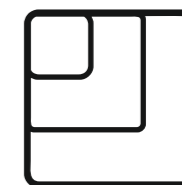




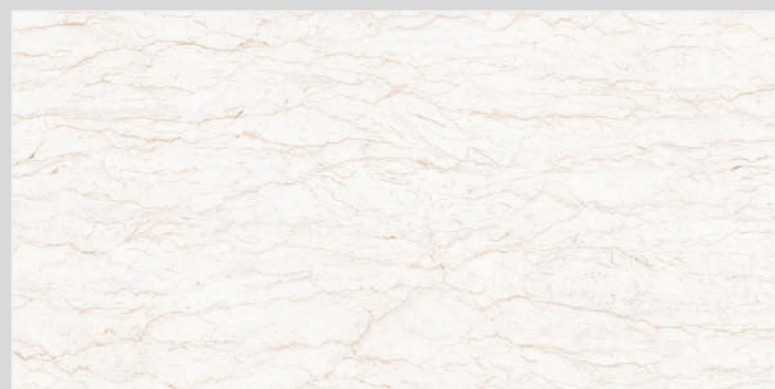
**CERAMIC  
TILES**

**300X600MM  
300X300MM**

**FINISH  
MATT**



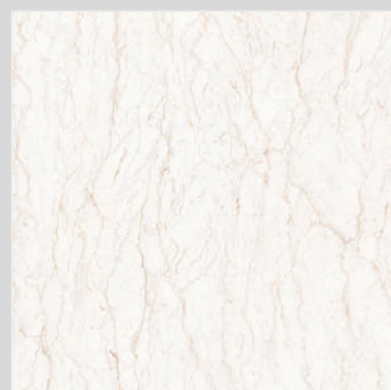
**PEROLINI**  
LUXE TILES



**9390 - L**



**9390 - HL**



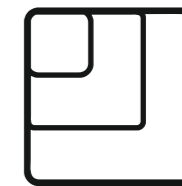
**9390 - FL**



**CERAMIC  
TILES**

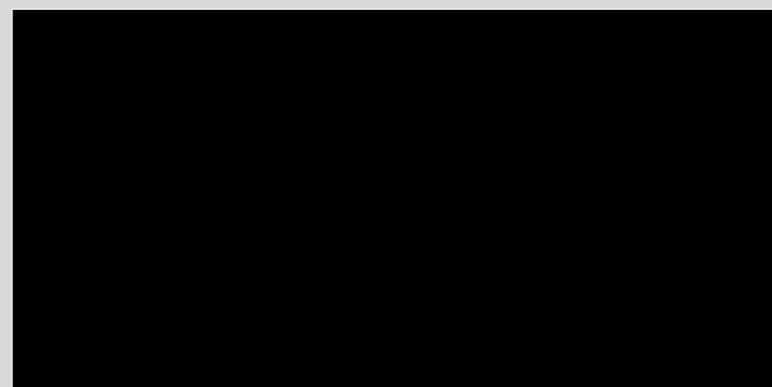
**300X600MM  
300X300MM**

**FINISH  
MATT**



**PEROLINI**

LUXE TILES



**BLACK**

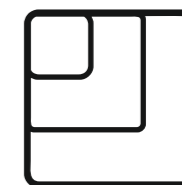




**CERAMIC  
TILES**

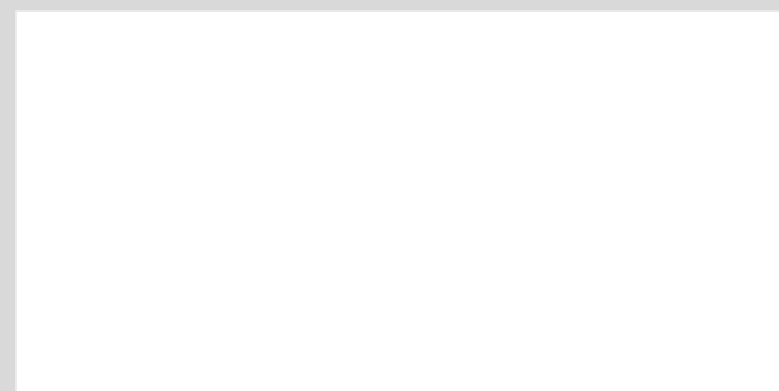
**300X600MM  
300X300MM**

**FINISH  
MATT**

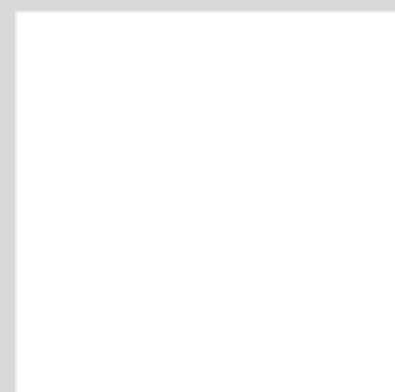


**PEROLINI**

LUXE TILES



**WHITE**



**WHITE - FL**

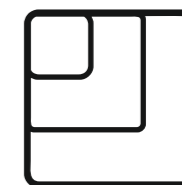




**CERAMIC  
TILES**

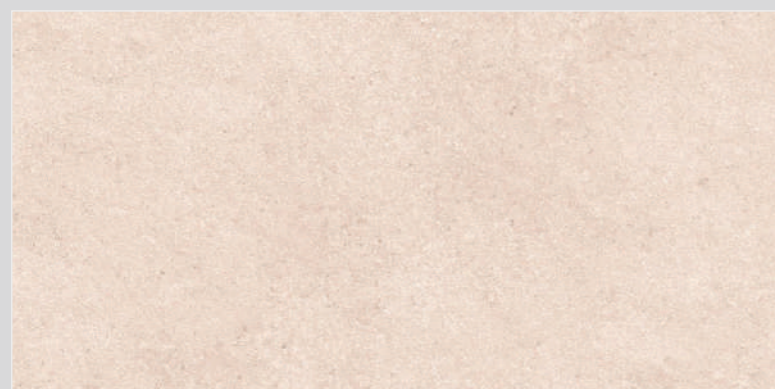
**300X600MM  
300X300MM**

**FINISH  
MATT**



**PEROLINI**

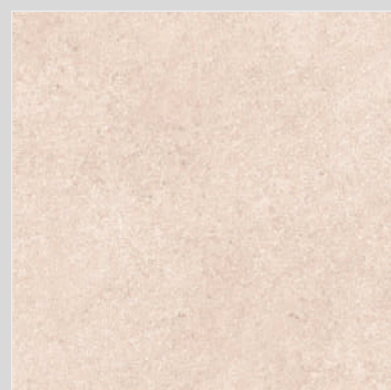
LUXE TILES



**9022 - L**



**9022 - HL**



**9022 - FL**





**CERAMIC  
TILES**

**300X600MM  
300X300MM**

**FINISH  
MATT**



**PEROLINI**  
LUXE TILES



**EL - 5061**





**CERAMIC  
TILES**

**300X600MM  
300X300MM**

**FINISH  
MATT**



**PEROLINI**  
LUXE TILES



**EL - 5062**





**CERAMIC  
TILES**

**300X600MM  
300X300MM**

**FINISH  
MATT**



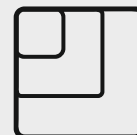
**PEROLINI**  
LUXE TILES



**TECHNO 1009**







## TECHNICAL SPECIFICATION

CHARACTERISTIC	STANDARD AS PER ISO-13006/ EN14411 GROUP BIa	CAPRON VITRIFIED TILES VALUE	TEST METHOD
<b>REGULATORY PROPERTIES</b>			
1) Deviation In Length & Width	±0.50%	±0.10%	ISO-10545-2
2) Deviation In Thickness	±5.00%	±2.00%	ISO-10545-2
3) Straightness Of Sides	±0.50%	±0.10%	ISO-10545-2
4) Rectangularity	±0.50%	±0.10%	ISO-10545-2
5) Surface Flatness	±0.50%	±0.10%	ISO-10545-2
6) Color Differences	Unaltered	No Change	ISO-10545-16
7) Glossiness	As Per Manufacturer	Min. 70 %	Glossometer
<b>STRUCTURAL PROPERTIES</b>			
1) Water Absorption	≤0.50%	≤0.05%	ISO-10545-3
2) Apparent Density	>2.00 gm/cc	>2.28 gm/cc	DIN 51082
<b>MASSIVE MECHANICAL PROPERTIES</b>			
1) Flexural Modulus Of Rupture	Min. 35N/mm <sup>2</sup>	Min. 40N/mm <sup>2</sup>	ISO-10545-4
2) Flexural Breaking Strength	Min. 1300 N	Min. 2000 N	ISO-10545-4
3) Impact Resistance	As Per Manufacturer	Min. 0.55	ISO-10545-5
<b>SURFACE MECHANICAL PROPERTIES</b>			
1) Deep Abrasion Resistance	Max. 175mm <sup>3</sup>	Max. 132mm <sup>3</sup>	ISO-10545-6
2) Moh's Hardness	Min. 6	8*	EN101
<b>THERMO HYGROMETRIC PROPERTIES</b>			
1) Frost Resistance	No Damage	Frost Proof	ISO-10545-12
2) Thermal Shock Resistance	No Damage	No Damage	ISO-10545-9
3) Moisture Expansion	Nil	Nil	ISO-10545-10
4) Thermal Expansion	Max 9.0x10 <sup>-6</sup>	Max 6.5x10 <sup>-6</sup>	ISO-10545-8
<b>CHEMICAL PROPERTIES</b>			
1) Chemical Resistance	No Damage	No Damage	ISO-10545-13
2) Stain Resistance	Resistant	Resistant	ISO-10545-14
<b>SAFETY PROPERTIES</b>			
1) Slip Resistance(friction Co Efficient)	>0.40	>0.40	ISO-10545-17

## PACKING DETAILS

Sr. No.	Size	Thickness (approx.)	Pieces / Box	Area/Box	Wt./Box (approx.)
1	600x1200mm	8.5 mm	2 pcs.	15.50 sq. ft.	28.5-29 kgs.
2	600x600mm	7.9mm	4 pcs.	15.50 sq. ft.	26.5-27 kgs.